

# Errata

In the January 2004 issue of the *Journal*, in the article entitled “The Burden of Genetic Disease on Inpatient Care in a Children’s Hospital,” by McCandless et al.

(74:121–127), several of the 95% CI listings in table 3 were transposed. The corrected table is shown here. The authors regret the error.

**Table 3**  
Summary of Data

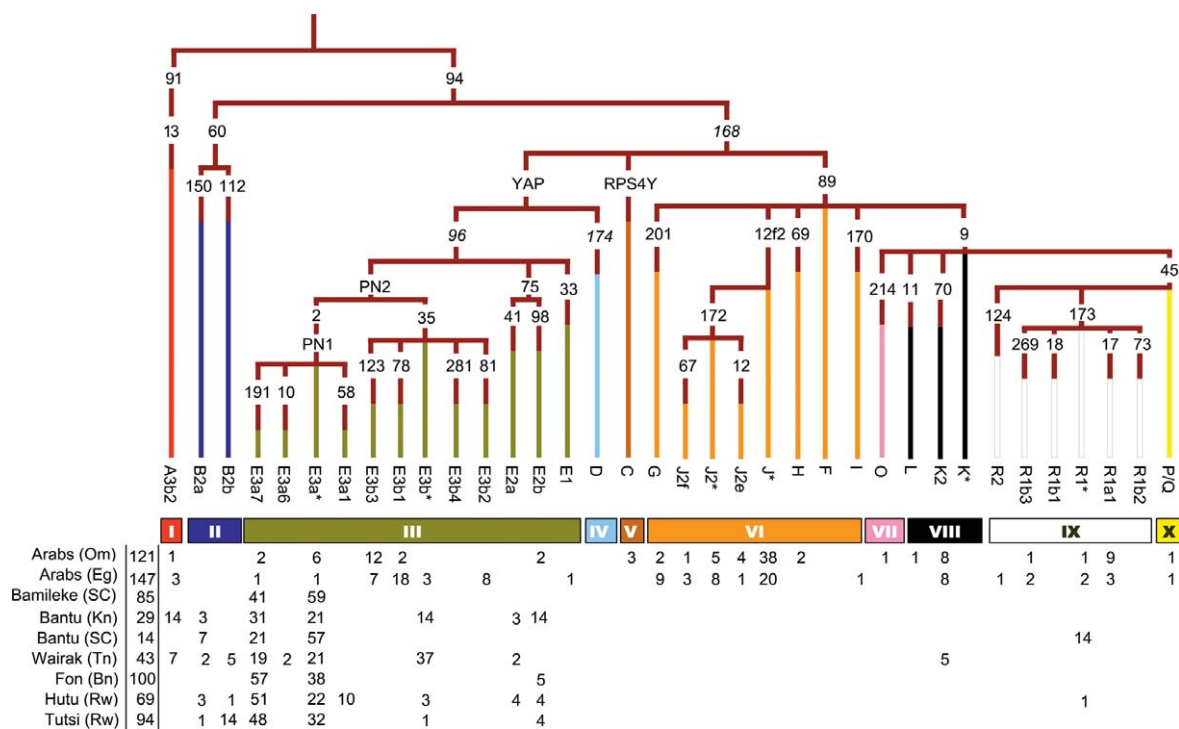
Category	No. of Patients	Average Age [years] (95% CI)	Average Length of Stay [d] (95% CI)	Average Charge (95% CI)
I-A	622	7.7 (7.2–8.2)	7.1 (6.0–8.2)	\$17,218 (\$13,234–\$21,440)
I-B	832	5.0 (4.6–5.4)	6.4 (5.2–7.5)	\$17,290 (\$14,044–\$20,355)
I-C	495	6.1 (5.5–6.6)	4.9 (4.1–5.6)	\$11,413 (\$9,553–\$13,273)
II-A	48	2.8 (1.5–4.0)	5.8 (3.8–7.8)	\$9,186 (\$5,647–\$12,725)
II-B	19	5.8 (3.1–8.5)	5.5 (1.5–9.5)	\$15,774 (\$2,274–\$29,273)
III	2,096	8.0 (7.8–8.3)	4.3 (3.8–4.7)	\$8,904 (\$7,744–\$10,063)
IV	72	6.8 (5.2–8.3)	7.6 (2.7–12.3)	\$16,857 (\$6,988–\$26,725)
V	1,563	6.6 (6.3–6.9)	3.5 (3.3–3.7)	\$6,985 (\$6,306–\$7,664)
I-A, I-B, I-C <sup>a</sup>	1,949	6.1 (5.9–6.4)	6.2 (5.6–6.8)	\$15,774 (\$13,735–\$17,500)
II-A, II-B <sup>b</sup>	67	5.4 (4.4–6.4)	5.7 (3.9–7.6)	\$11,054 (\$5,022–\$15,602)

<sup>a</sup> Represents the combination of the three subgroups of category I.

<sup>b</sup> Represents the combination of the two subgroups of category II.

In the March 2004 issue of the *Journal*, in the article entitled “The Levant versus the Horn of Africa: Evidence for Bidirectional Corridors of Human Migrations,” by Luis et al. (74:532–544), owing to a file-conversion error,

the name of two markers (91 and 13) and the frequencies of E3a\* for Arabs (OM) (6), Bamileke (SC) (59), and Bantu (Kn) (21) were incorrect in figure 1. The corrected figure is shown here. The publishers regret the error.



**Figure 1** Maximum-parsimony hierarchy and frequency table. A total of 44 binary markers and 36 haplogroups are represented; 31 of these haplogroups are detected in 702 African and Omani males. Markers not typed are shown in italics. Om = Oman, Eg = Egypt, SC = southern Cameroon, Kn = Kenya, Tn = Tanzania, Bn = Benin, Rw = Rwanda.